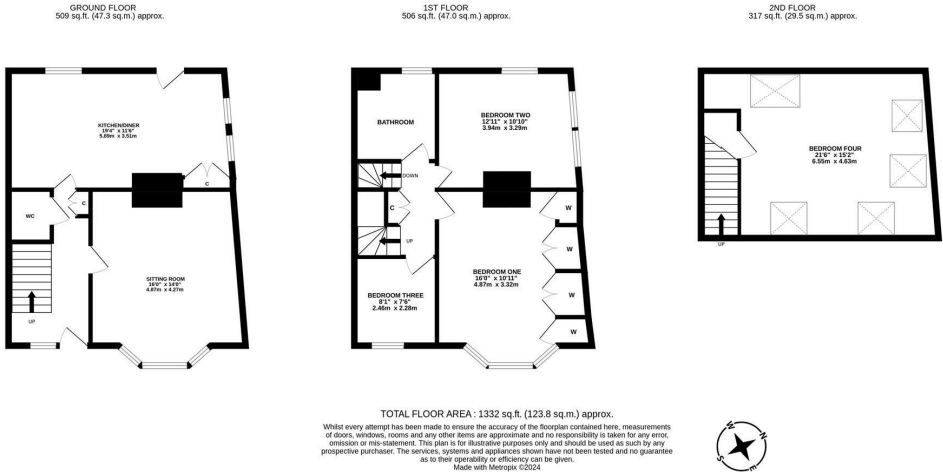


This delightful, three bedroom end-terrace is ideally located on Dinsdale Road, Sandyford. Dinsdale Road, positioned within striking distance to Jesmond Dene, local shops, cafe's and restaurants within Sandyford itself and also within close proximity to both Heaton and Newcastle City Centre.

The accommodation briefly comprises: entrance hall with stairs to first floor, storage cupboard and under-stairs WC; sitting room with walk in bay; 19ft kitchen diner with a range of fitted units, hardwood work surfaces, storage cupboard, spot lighting, dual aspect windows and rear door access to the yard. The first floor landing with storage cupboard gives access to; three bedrooms, two of which are comfortable doubles and bedroom one with walk in bay and fitted wardrobe storage cupboards; family bathroom complete with three piece suite. To the second floor, a further double bedroom with Velux windows. Externally, a generous north-west facing rear yard, paved with a mixture of mature planting, fenced boundaries and gated access to the rear service lane. Early viewings are advised to avoid disappointment!

Period End-Terrace | 1,332 Sq ft (123.8m2) | Four Bedrooms | Sitting Room | 19ft Kitchen Diner | Downstairs WC | Family Bathroom | Generous North-West Facing Yard | GCH & DG | Popular Location | Freehold | Council Tax Band | EPC: E



Offers Over £275,000

IMPORTANT NOTE: These particulars and the descriptions and measurements herein do not constitute representation and whilst every effort has been made to ensure accuracy, this cannot be guaranteed.

